

**BUILD YOUR OWN  
GREEN NETWORK**



## 16-PORT 10/100 SWITCH

### *ECO-FRIENDLY AND ECONOMICAL*

Economical yet innovative design runs cool and quiet

### *HIGH SPEED NETWORKING*

Fast Ethernet ports allow you to connect all your devices for fast file transfers and smooth media streaming

### *SAVES ENERGY AUTOMATICALLY*

WEEE compliance reduces energy consumption without sacrificing performance



### *THINK GREEN*

The D-Link DES-1016A 16-Port 10/100 Switch is part of D-Link's new series of SOHO devices that make use of D-Link's Green Technology, providing energy savings, reduced heat, and a longer product life without sacrificing performance or functionality. An energy-efficient power adapter (EnergyStar Level V qualified), minimized use of harmful substances (RoHS compliant), and recyclable packaging make this switch truly environmentally friendly.

### *CONSERVES ENERGY*

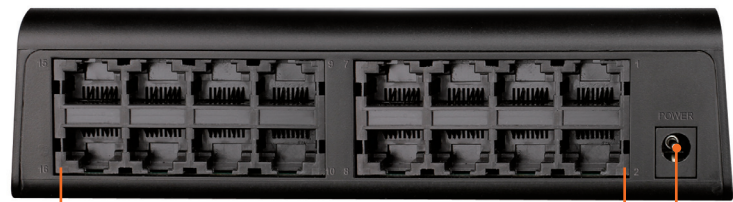
The DES-1016A 16-Port 10/100 Switch helps you conserve energy automatically through several methods. It automatically powers down ports that have no link, allowing the switch to save substantial amounts of power by cutting power usage for unused ports or ports connected to computers that have been shut down. The switch also conserves energy by adjusting power usage according to different cable lengths of connected devices without affecting performance.

### *ENVIRONMENTALLY FRIENDLY*

The DES-1016A was designed with the environment in mind, and is compliant with Energy Star Level V, as well as with the stringent CEC and MEPS regulations that require the use of energy efficient power adapters. The switch is also built to follow RoHS standards to minimize use of hazardous materials, and uses recyclable packaging that helps reduce waste, complying with the WEEE directive.

### WHAT THIS PRODUCT DOES

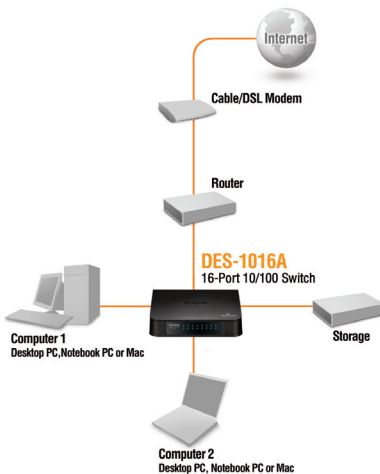
The DES-1016A 16-Port 10/100 Switch offers an economical way for SOHO and small to medium businesses (SMB) to benefit from fast speed networking. It provides sixteen ports for easy expansion of your network and a quick way to upgrade your network to Fast Ethernet connectivity.



SIXTEEN 10/100 ETHERNET PORTS  
Connect computers, print servers, or network storage

POWER CONNECTOR  
Connects to power adapter

### YOUR NETWORK SETUP



### TECHNICAL SPECIFICATIONS

#### KEY FEATURES

- Built-in D-Link Green Technology
- Inexpensive Fast Ethernet solution for Home/SOHO
- Sixteen 10/100 Mbps Fast Ethernet ports
- 3.2 Gbps switching fabric
- Auto MDI/MDIX crossover for all ports
- Secure store-and-forward switching scheme
- Full/half-duplex for Ethernet/Fast Ethernet speeds
- IEEE 802.3x Flow Control
- Supports 9,216 Byte Jumbo Frames
- RoHS compliant
- Plug-and-play installation

#### STANDARDS

- IEEE 802.1P QoS support
- IEEE 802.3 10BASE-T Ethernet (twisted-pair copper)
- IEEE 802.3u 100BASE-TX Fast Ethernet (twisted-pair copper)
- IEEE 802.3az Energy-Efficient Ethernet (EEE)
- ANSI/IEEE 802.3 NWay auto-negotiation
- IEEE 802.3x Flow Control

#### PROTOCOL

- CSMA/CD

#### DATA TRANSFER RATES

- Ethernet:
  - 10 Mbps (half duplex)
  - 20 Mbps (full duplex)
- Fast Ethernet:
  - 100 Mbps (half duplex)
  - 200 Mbps (full duplex)

#### TOPOLOGY

- Star

#### NETWORK CABLES

- 10BASE-T:
  - UTP CAT 3, 4, 5/5e (100 m max.)
  - EIA/TIA-568 100-ohm STP (100 m max.)
- 100BASE-TX, 1000BASE-T:
  - UTP CAT 5/5e (100 m max.)
  - EIA/TIA-568 100-ohm STP (100 m max.)

#### MEDIA INTERFACE EXCHANGE

- Auto MDI/MDIX adjustment for all ports

#### LED INDICATORS

- Per port: Link/Activity/Speed
- Per device: Power

#### TRANSMISSION METHOD

- Store-and-forward

#### MAC ADDRESS TABLE

- 8K entries per device

#### MAC ADDRESS LEARNING

- Automatic update

#### PACKET FILTERING/FORWARDING RATES

- Ethernet: 14,880 pps per port
- Fast Ethernet: 148,800 pps per port

#### RAM BUFFER

- 256 KBytes per device

#### DC INPUT

- Switching 5 V / 1 A Level V Power Adapter

#### POWER CONSUMPTION

- Power On (Standby):
  - AC input: 2.36 watts
  - DC input: 1.2 watts
- Maximum:
  - AC input: 2.69 watts
  - DC input: 1.6 watts

#### OPERATING TEMPERATURE

- 0 to 40 °C (32 to 104 °F)

#### STORAGE TEMPERATURE

- -10 to 70 °C (14 to 158 °F)

#### OPERATING HUMIDITY

- 10% to 90% RH non-condensing

#### STORAGE HUMIDITY

- 5% to 90% RH non-condensing

#### DEVICE DIMENSIONS (W x D x H)

- 155.7 x 122 x 41 mm  
(6.13 x 4.80 x 1.61 inches)

#### CERTIFICATIONS

- CE Class B
- FCC class B
- CB
- RoHS
- EuP



D-Link Corporation  
No. 289 Xinhua 3rd Road, Neihu, Taipei 114, Taiwan  
Specifications are subject to change without notice.  
D-Link is a registered trademark of D-Link Corporation and its overseas subsidiaries.  
All other trademarks belong to their respective owners.  
©2012 D-Link Corporation. All rights reserved.  
Release 01 (March 2012)