



Hardware Quick Installation Guide Unshielded Patch Panel

This document will guide you through the basic installation process for your new D-Link Unshielded Patch Panel.



Quick Installation Guide

About This Guide

This guide contains step-by-step instructions for setting up your D-Link Unshielded Patch Panel. Please note that the model you have purchased may appear slightly different from those shown in the illustrations.

Product Overview

Front Panel



Figure 1. Unshielded Patch Panel Front

Color Coding Information

T568A		T568B	
Pin 1	White/Green	Pin 1	White/Orange
Pin 2	Green	Pin 2	Orange
Pin 3	White/Orange	Pin 3	White/Green
Pin 4	Blue	Pin 4	Blue
Pin 5	White/Blue	Pin 5	White/Blue
Pin 6	Orange	Pin 6	Green
Pin 7	White/Brown	Pin 7	White/Brown
Pin 8	Brown	Pin 8	Brown

Table 1. Wire Color Code

Installation

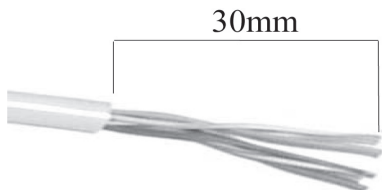


Figure 2. Cable Wiring

- A. To connect cable to the Unshielded Patch Panel, first take the end of the cable wiring and strip approximately 30 mm of the cable jacket. (Figure 2)
- B. Following the IDC color code for T568A or T568B wiring (Table 1), separate the wires into 4 pairs.

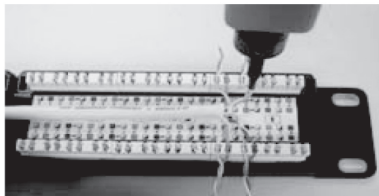


Figure 3.

- C. Use an impact tool to punch in the wires and connect them into the IDC connector on the back of the panel. (Figure 3)

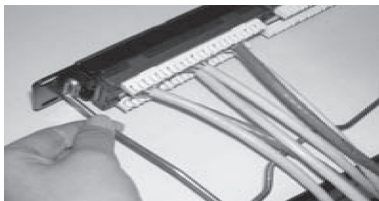


Figure 4.

- D. Lock the support bar onto the rear of the panel (Figure 4)

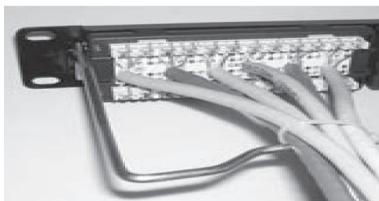


Figure 5.

- E. Use a twist tie to secure the cables tightly on the support bar. (Figure 5)