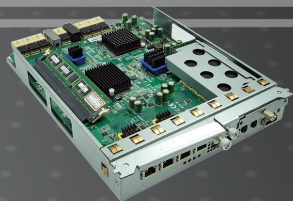


## ISCSI IP SAN STORAGE



*DSN-610/640 Series*

- Quick Installation Guide+
- Руководство по быстрой установке+
- Guía de Instalación Rápida+
- 快速安裝指南+
- Petunjuk Pemasangan Cepat+

# Quick Installation Guide

## DSN-610/640

iSCSI IP SAN storage

### Package Contents

---

If any of the items are missing, please contact your reseller.



RAID controller, DSN-610  
or DSN-640 (x1)



GBIC transceiver (x1) and  
cable (x1) for DSN-640  
only

### Install battery backup module

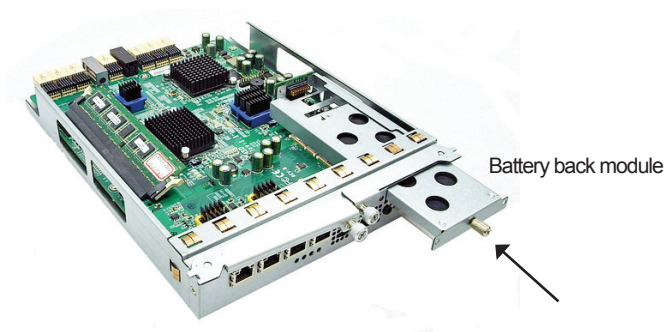
---

Please follow procedure below to install battery backup module.

1. Make sure DSN-6000 series is power off.
2. Remove the cover of battery backup module.



3. Insert the battery backup module.



4. Tighten the screws up.
5. Power on DSN-6000 series

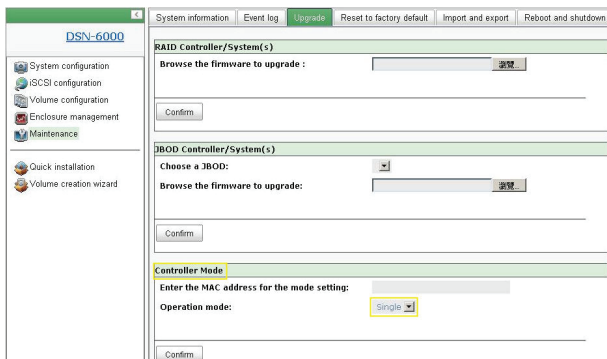
## Install DSN-610/DSN-640 in DSN-6x10 subsystem

This following procedure applies to upgrading from DSN-6110 to DSN6120 as well as from DSN-6410 to DSN-6420. Before you do this, please make sure that either DSN-6110 or DSN-6410 is properly installed according to the manuals.

Before you can insert the second controller to the IP SAN storage, the IP SAN storage system should be up and running and the maintenance/system page of the GUI should look like the following screenshot.. Note that the status is single as you have one controller only.

System information		Event log	Upgrade	Reset to factory default
<b>DSN-6000</b>				
<ul style="list-style-type: none"> <li>System configuration</li> <li>iSCSI configuration</li> <li>Volume configuration</li> <li>Enclosure management</li> <li>Maintenance</li> </ul>				
<ul style="list-style-type: none"> <li>Quick installation</li> <li>Volume creation wizard</li> </ul>				
Item	Information			
CPU type	XSC3-10P8134x Family rev 9 (v51)			
System memory	ECC Unbuffered DDR-II 2048MB			
Firmware version	DSN-6000 2.0.1 (build 201102111500)			
Serial number	14D64D868E40 (Controller 1 : 500137800390AD98 )			
Backplane ID	DSN6000			
JBOD serial no.	No JBOD connected			
JBOD status	No JBOD connected			
Status	Single			
Replication	Not activated.			

You can also verify controller mode in “Maintenance\Upgrade”. Check out the “Controller Mode” section.



Please follow the steps below to upgrade to dual controller mode.

## Step 1

Go to “Maintenance\System”. Copy the IP SAN storage serial number.

DSN-6000		System information	Event log	Upgrade	Reset to factory default	
System configuration	iSCSI configuration	Volume configuration	Enclosure management	Maintenance	Quick installation	Volume creation wizard
Item	Information					
CPU type	XSC3-IOP8134x Family rev 9 (v5I)					
System memory	ECC Unbuffered DDR-II 2048MB					
Firmware version	DSN-6000 2.0.1 (build 201102111500)					
Serial number	14D64D868E40 Controller 1 : 500137800390AD98 )					
Backplane ID	DSN6000					
JBOD serial no.	No JBOD connected					
JBOD status	No JBOD connected					
Status	Single					
Replication	Not activated.					

## Step 2

Go to “Maintenance\Upgrade” and paste the serial number into “Controller Mode” section. Select “Dual” as operation mode.

System information	Event log	Upgrade	Reset to factory default	Import and export	Reboot and shutdown
<b>RAID Controller/System(s)</b>					
Browse the firmware to upgrade :					
<input type="text"/>					
<input type="button" value="瀏覽"/>					
<input type="button" value="Confirm"/>					
<b>JBOD Controller/System(s)</b>					
Choose a JBOD:					
<input type="text"/>					
Browse the firmware to upgrade:					
<input type="text"/>					
<input type="button" value="瀏覽"/>					
<input type="button" value="Confirm"/>					
<b>Controller Mode</b>					
Enter the MAC address for the mode setting: 14D64D868E40					
Operation mode:					
Single					
Dual					
Single					
<input type="button" value="Confirm"/>					

## Step 3

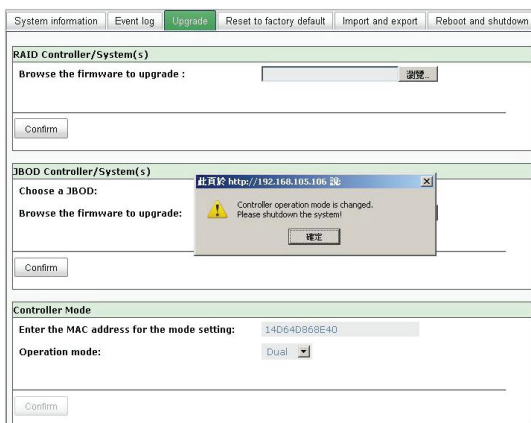
Click “confirm”. The system will ask you to shutdown. Please shutdown IP SAN storage.

System information	Event log	Upgrade	Reset to factory default	Import and export	Reboot and shutdown
<b>RAID Controller/System(s)</b>					
Browse the firmware to upgrade :					
<input type="text"/>					
<input type="button" value="瀏覽"/>					
<input type="button" value="Confirm"/>					
<b>JBOD Controller/System(s)</b>					
Choose a JBOD:					
<input type="text"/>					
Browse the firmware to upgrade:					
<input type="text"/>					
<input type="button" value="瀏覽"/>					
<input type="button" value="Confirm"/>					
<b>Controller Mode</b>					
Enter the MAC address for the mode setting: 14D64D868E40					
Operation mode:					
Dual					
<input type="button" value="Confirm"/>					

此頁於 <http://192.168.105.106> 處

Controller operation mode will be changed. Sure?

Click Ok.



Go to "Maintenance\Reboot and shutdown". Click "Shutdown" to shutdown the system.

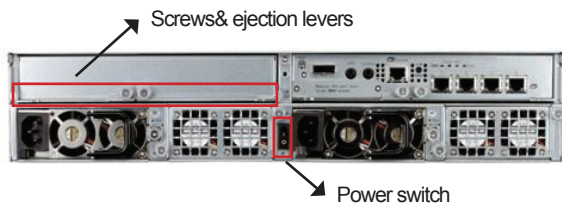


Click Ok.



## Step 4

Power off DSN-6110 or DSN-6410 by switching power button. Remove the empty cage by loosen the screws and ejection levers.



## Step 5

Insert the second controller to the IP SAN storage and secure in place, then power on the system.



The IP SAN storage should now appear in dual controller mode as either DSN-6120 or DSN-6420.

Go to “Maintenance\System information” to check that the IP SAN storage is running in dual controller mode now.

System information		Event log	Upgrade	Firmware synchronization	Reset to factory default	Import
DSN-6000						
<ul style="list-style-type: none"> <li>System configuration</li> <li>iSCSI configuration</li> <li>Volume configuration</li> <li>Enclosure management</li> <li>Maintenance</li> <li>Quick installation</li> <li>Volume creation wizard</li> </ul>						
Item	Information					
CPU type	XSC3-IOP8134x Family rev 9 (v6)					
System memory	ECC Unbuffered DDR-II 2048MB					
Firmware version	DSN-6000 2.0.1 (build 201102111500)					
Serial number	14D64D668E4D (Controller 1 : 500137800390AD98 , Controller 2 : 500137800390A5D6)					
Backplane ID	DSN6000					
JBOD serial no.	No JBOD connected					
JBOD status	No JBOD connected					
Status	Normal					
Replication	Not activated					

## TECHNICAL SUPPORT

You can find software updates and user documentation on the D-Link website.

## Tech Support for customers in

### Australia:

Tel: 1300-766-868  
24/7 Technical Support  
Web: <http://www.dlink.com.au>  
E-mail: [support@dlink.com.au](mailto:support@dlink.com.au)

### India:

Tel: +91-22-27626600  
Toll Free 1800-22-8998  
Web: [www.dlink.co.in](http://www.dlink.co.in)  
E-Mail: [helpdesk@dlink.co.in](mailto:helpdesk@dlink.co.in)

### Singapore, Thailand, Indonesia, Malaysia, Philippines, Vietnam:

Singapore - [www.dlink.com.sg](http://www.dlink.com.sg)  
Thailand - [www.dlink.co.th](http://www.dlink.co.th)  
Indonesia - [www.dlink.co.id](http://www.dlink.co.id)  
Malaysia - [www.dlink.com.my](http://www.dlink.com.my)  
Philippines - [www.dlink.com.ph](http://www.dlink.com.ph)  
Vietnam - [www.dlink.com.vn](http://www.dlink.com.vn)

### Korea:

Tel: +82-2-2028-1810  
Monday to Friday 9:00am to 6:00pm  
Web: <http://d-link.co.kr>  
E-mail: [g2b@d-link.co.kr](mailto:g2b@d-link.co.kr)

### New Zealand:

Tel: 0800-900-900  
24/7 Technical Support  
Web: <http://www.dlink.co.nz>  
E-mail: [support@dlink.co.nz](mailto:support@dlink.co.nz)

### South Africa and Sub Sahara Region:

Tel: +27 12 661 2025  
08600 DLINK (for South Africa only)  
Monday to Friday 8:30am to 9:00pm South Africa Time  
Web: <http://www.d-link.co.za>  
E-mail: [support@d-link.co.za](mailto:support@d-link.co.za)

### Saudi Arabia (KSA):

Tel: +966 01 217 0008  
Fax: +966 01 217 0009  
Saturday to Wednesday 9.30AM to 6.30PM  
Thursdays 9.30AM to 2.00 PM  
E-mail: [Support.sa@dlink-me.com](mailto:Support.sa@dlink-me.com)

### D-Link Middle East - Dubai, U.A.E.

Plot No. S31102,  
Jebel Ali Free Zone South,  
P.O.Box 18224, Dubai, U.A.E.  
Tel: +971-4-8809022  
Fax: +971-4-8809066 / 8809069  
Technical Support: +971-4-8809033  
General Inquiries: [info.me@dlink-me.com](mailto:info.me@dlink-me.com)  
Tech Support: [support.me@dlink-me.com](mailto:support.me@dlink-me.com)

### Egypt

1, Makram Ebeid Street - City Lights Building  
Nasrcity - Cairo, Egypt  
Floor 6, office C2  
Tel.: +2 02 26718375 - +2 02 26717280  
Technical Support: +2 02 26738470  
General Inquiries: [info.eg@dlink-me.com](mailto:info.eg@dlink-me.com)  
Tech Support: [support.eg@dlink-me.com](mailto:support.eg@dlink-me.com)

### Kingdom of Saudi Arabia

Office # 84 ,  
Al Khaleej Building ( Mujamathu Al-Khaleej)  
Opp. King Fahd Road, Olaya  
Riyadh - Saudi Arabia  
Tel: +966 1 217 0008  
Technical Support:  
+966 1 2170009 / +966 2 6522951  
General Inquiries: [info.sa@dlink-me.com](mailto:info.sa@dlink-me.com)  
Tech Support: [support.sa@dlink-me.com](mailto:support.sa@dlink-me.com)

### Pakistan

Islamabad Office:  
61-A, Jinnah Avenue, Blue Area,  
Suite # 11, EBC, Saudi Pak Tower,  
Islamabad - Pakistan  
Tel.: +92-51-2800397, 2800398  
Fax: +92-51-2800399

#### Karachi Office:

D-147/1, KDA Scheme # 1,  
Opposite Mudassir Park, Karsaz Road,  
Karachi - Pakistan  
Phone: +92-21-34548158, 34326649  
Fax: +92-21-4375727  
Technical Support: +92-21-34548310, 34305069  
General Inquiries: [info.pk@dlink-me.com](mailto:info.pk@dlink-me.com)  
Tech Support: [support.pk@dlink-me.com](mailto:support.pk@dlink-me.com)



**Iran**

Unit 5, 5th Floor, No. 20, 17th Alley , Bokharest  
St. , Argentine Sq. ,  
Tehran IRAN  
Postal Code : 1513833817  
Tel: +98-21-88880918,19  
+98-21-88706653,54  
General Inquiries: info.ir@dlink-me.com  
Tech Support: support.ir@dlink-me.com

**ISRAEL**

מטלון סנטר  
רח' המגשימים 20  
קרית מטלון, פ"ת 49348  
ת.ד. 7060  
טלפון: 073-277-11-77  
אי-מאייל כללי: info@dlink.co.il  
אי-מאייל תמיכה: support@dlink.co.il

**Morocco**

M.I.T.C  
Route de Nouaceur angle RS et CT 1029  
Bureau N° 312 ET 337  
Casablanca , Maroc  
Phone : +212 663 72 73 24  
Email: support.na@dlink-me.com

**Lebanon RMA center**

Dbayeh/Lebanon  
PO Box:901589  
Tel: +961 4 54 49 71 Ext:14  
Fax: +961 4 54 49 71 Ext:12  
Email: taoun@dlink-me.com

**Bahrain**

Technical Support: +973 1 3332904

**Kuwait:**

Technical Support: + 965 22453939 / +965  
22453949

**Türkiye Merkez İrtibat Ofisi**

Ayazağa Maslak yolu  
Erdebil Cevahir İş Merkezi No: 5/A Ayazağa /  
Maslak İstanbul  
Tel: +90 212 2895659  
Ücretsiz Müşteri Destek Hattı: 0 800 211 00 65  
Web:www.dlink.com.tr  
Teknik Destek: support.tr@dlink.com.tr

## Руководство по быстрой установке DSN-610/640

iSCSI IP SAN Дисковый массив

### Комплект поставки

Если что-либо из перечисленного отсутствует, пожалуйста, обратитесь к продавцу.



RAID-контроллер,  
DSN-610 или DSN-640  
(x1)



GBIC-трансивер (x1) и  
кабель (x1) только для  
DSN-640

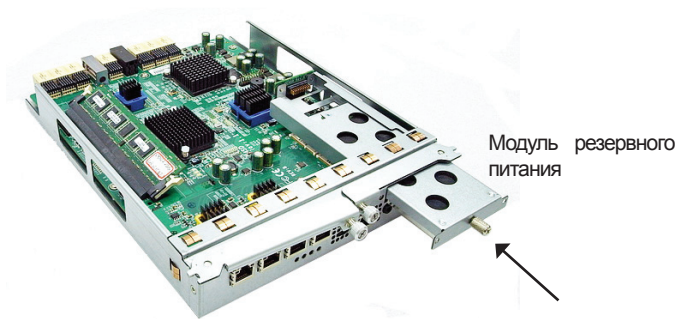
### Установка модуля резервного питания

Для установки модуля резервного питания выполните шаги, указанные ниже.

1. Убедитесь, что питание дискового массива серии DSN-6000 выключено.
2. Снимите крышку с модуля резервного питания.



3. Вставьте модуль резервного питания.



4. Затяните винты.

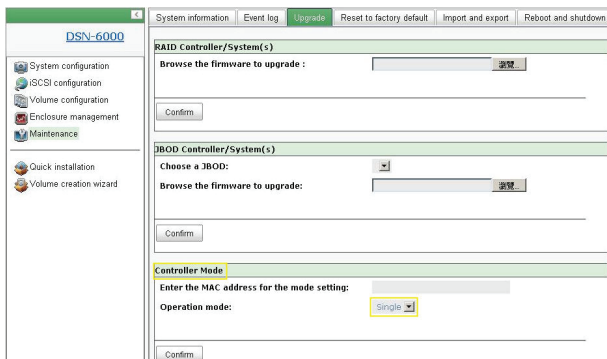
5. Включите дисковый массив серии DSN-6000.

## Установка DSN-610/DSN-640 в подсистеме DSN-6x10

Эта процедура выполняется для перехода от DSN-6110 к DSN-6120, а также для перехода от DSN-6410 к DSN-6420. Прежде, чем начать, убедитесь, что DSN-6110 или DSN-6410 установлен в соответствии с руководством пользователя. Перед установкой второго контроллера в дисковый массив IP SAN необходимо запустить систему IP SAN, а страница Web-интерфейса «Maintenance/system» (Обслуживание/система) должна соответствовать скриншоту, представленному ниже. Примечание: Значение статуса – «Single», так как используется только один контроллер.

DSN-6000																					
System configuration	System information																				
iSCSI configuration	Event log																				
Volume configuration	Upgrade																				
Enclosure management	Reset to factory default																				
Maintenance																					
Quick installation																					
Volume creation wizard																					
	<table border="1"> <thead> <tr> <th>Item</th> <th>Information</th> </tr> </thead> <tbody> <tr> <td>CPU type</td> <td>XSC3-10P8134x Family rev 9 (v51)</td> </tr> <tr> <td>System memory</td> <td>ECC Unbuffered DDR-II 2048MB</td> </tr> <tr> <td>Firmware version</td> <td>DSN-6000 2.0.1 (build 201102111500)</td> </tr> <tr> <td>Serial number</td> <td>14D64D868E40 (Controller 1 : 500137800390AD98 )</td> </tr> <tr> <td>Backplane ID</td> <td>DSN6000</td> </tr> <tr> <td>JBOD serial no.</td> <td>No JBOD connected</td> </tr> <tr> <td>JBOD status</td> <td>No JBOD connected</td> </tr> <tr> <td>Status</td> <td>Single</td> </tr> <tr> <td>Replication</td> <td>Not activated.</td> </tr> </tbody> </table>	Item	Information	CPU type	XSC3-10P8134x Family rev 9 (v51)	System memory	ECC Unbuffered DDR-II 2048MB	Firmware version	DSN-6000 2.0.1 (build 201102111500)	Serial number	14D64D868E40 (Controller 1 : 500137800390AD98 )	Backplane ID	DSN6000	JBOD serial no.	No JBOD connected	JBOD status	No JBOD connected	Status	Single	Replication	Not activated.
Item	Information																				
CPU type	XSC3-10P8134x Family rev 9 (v51)																				
System memory	ECC Unbuffered DDR-II 2048MB																				
Firmware version	DSN-6000 2.0.1 (build 201102111500)																				
Serial number	14D64D868E40 (Controller 1 : 500137800390AD98 )																				
Backplane ID	DSN6000																				
JBOD serial no.	No JBOD connected																				
JBOD status	No JBOD connected																				
Status	Single																				
Replication	Not activated.																				

Также можно проверить режим контроллера в «Maintenance/Upgrade» (Обслуживание/Обновление) в разделе «Controller Mode».



Пожалуйста, для перехода в режим использования двух контроллеров выполните следующие шаги.

## Шаг 1

Зайдите в «Maintenance/System» (Обслуживание/Система). Скопируйте серийный номер дискового массива IP SAN.

DSN-6000		System information	Event log	Upgrade	Reset to factory default
Item	Information				
CPU type	XSC3-10P8134x Family rev 9 (v5I)				
System memory	ECC Unbuffered DDR-II 2048MB				
Firmware version	DSN-6000 2.0.1 (build 201102111500)				
Serial number	14D64D868E40 Controller 1 : 500137800390AD98 )				
Backplane ID	DSN6000				
JBOD serial no.	No JBOD connected				
JBOD status	No JBOD connected				
Status	Single				
Replication	Not activated.				

## Шаг 2

Зайдите в «Maintenance/Upgrade» (Обслуживание/Обновление) и введите серийный номер в разделе «Controller Mode». Выберите «Dual» в качестве режима работы.

The screenshot shows the 'Upgrade' tab in the RAID controller's maintenance menu. It contains three sections:

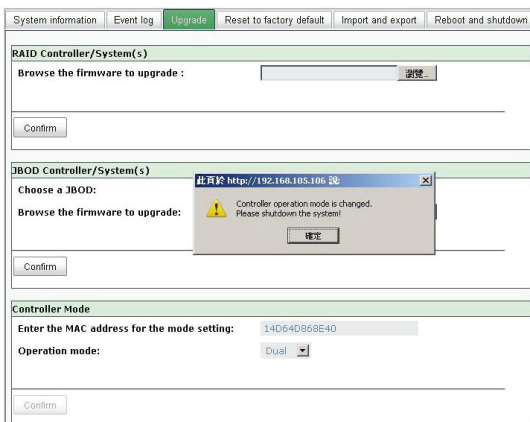
- RAID Controller/System(s)**: A field for 'Browse the firmware to upgrade' with a file browser icon and a 'Confirm' button below it.
- JBOD Controller/System(s)**: A 'Choose a JBOD:' dropdown menu, a 'Browse the firmware to upgrade' field with a file browser icon, and a 'Confirm' button below it.
- Controller Mode**: A field for 'Enter the MAC address for the mode setting:' containing '14D64D868E40', an 'Operation mode:' dropdown menu with 'Dual' selected, and a 'Confirm' button below it.

## Шаг 3

Нажмите «Confirm» (Подтвердить). Появится запрос системы на отключение. Пожалуйста, отключите дисковый массив IP SAN.

This screenshot is identical to the previous one, but with a confirmation dialog box overlaid on the JBOD section. The dialog box has a blue header with the URL 'http://192.168.105.106 說' and a question mark icon. The text inside reads: 'Controller operation mode will be changed. Sure?'. There are two buttons at the bottom: '確定' (Confirm) and '取消' (Cancel).

Нажмите Ок.



Зайдите в «Maintenance/Reboot and shutdown» (Обслуживание/Перезагрузка и выключение). Нажмите «Shutdown» для выключения системы.



Нажмите Ок.



## Шаг 4

Отключите DSN-6110 или DSN-6410 с помощью кнопки переключения питания. Снимите заглушку отсека, ослабив винты и используя рычаги.



## Шаг 5

Вставьте второй контроллер в дисковый массив IP SAN и зафиксируйте его, далее включите систему.



Теперь дисковый массив работает с использованием двух контроллеров (режим Dual), например, как DSN-6120 или DSN-6420. Зайдите в «Maintenance/System information» (Информация об Обслуживании/Системе), чтобы убедиться, что дисковый массив IP SAN работает в режиме Dual.

Item	Information
CPU type	X5C3-IOP8134x Family rev 9 (v5)
System memory	ECC Unbuffered DDR-II 2048MB
Firmware version	DSN-6000 2.0.1 (build 201102111500)
Serial number	14D64068E40 (Controller 1 : 500137800390AD98 ,Controller 2 : 500137800390A5D6)
Backplane ID	DSN6000
JBOD serial no.	No JBOD connected
JBOD status	No JBOD connected
Status	Normal
Replication	Not activated

## ТЕХНИЧЕСКАЯ ПОДДЕРЖКА

Обновления программного обеспечения и документация доступны на Интернет-сайте D-Link. D-Link предоставляет бесплатную поддержку для клиентов в течение гарантийного срока.

Клиенты могут обратиться в группу технической поддержки D-Link по телефону или через Интернет.

### Техническая поддержка D-Link:

+7(495) 744-00-99

### Техническая поддержка через Интернет

<http://www.dlink.ru>

e-mail: [support@dlink.ru](mailto:support@dlink.ru)

## ОФИСЫ

### Украина,

04080 г. Киев, ул. Межигорская, 87-А, офис 18

Тел.: +38 (044) 545-64-40

E-mail: [kiev@dlink.ru](mailto:kiev@dlink.ru)

### Беларусь

220114, г. Минск, проспект Независимости, 169, БЦ "XXI Век"

Тел.: +375(17) 218-13-65

E-mail: [minsk@dlink.ru](mailto:minsk@dlink.ru)

### Казахстан,

050008, г. Алматы, ул. Курмангазы, дом 143

(уг. Муканова)

Тел./факс: +7 727 378-55-90

E-mail: [almaty@dlink.ru](mailto:almaty@dlink.ru)

### Узбекистан

100015, г.Ташкент, ул. Нукуская, 89

Тел./Факс: +998 (71) 120-3770, 150-2646

E-mail: [tashkent@dlink.ru](mailto:tashkent@dlink.ru)

### Армения

0038, г. Ереван, ул. Абеяна, 6/1, 4 этаж

Тел./Факс: + 374 (10) 398-667

E-mail: [erevan@dlink.ru](mailto:erevan@dlink.ru)

### Грузия

0162, г. Тбилиси,

проспект Чавчавадзе 74, 10 этаж

Тел./Факс: + 995 (32) 244-563

### Lietuva

09120, Vilnius, Žirmūnų 139-303

Tel./faks. +370 (5) 236-3629

E-mail: [info@dlink.lt](mailto:info@dlink.lt)

### Eesti

Peterburi tee 46-205

11415, Tallinn, Eesti, Susi Bürookeskus

tel +372 613 9771

e-mail: [info@dlink.ee](mailto:info@dlink.ee)

### Latvija

Mazā nometņu 45/53 (ieeja no Nāras ielas)

LV-1002, Rīga

tel.: +371 6 7618703 +371 6 7618703

e-pasts: [info@dlink.lv](mailto:info@dlink.lv)



# Guía de Instalación Rápida DSN-610/640

SAN Storage IP iSCSI

## Contenido del Empaque

Si alguno de los ítems no se encuentra, por favor contacte a su vendedor.



Controlador RAID,  
DSN-610 o DSN-640  
(x1)



Transceiver GBIC (x1)  
y cable (x1) solo para  
DSN-640

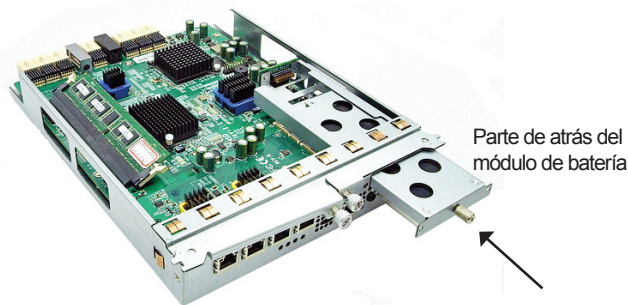
## Instalar módulo de batería de respaldo

Por favor siga el procedimiento que se detalla a continuación para instalar el módulo de batería de respaldo.

1. Asegúrese que el dispositivo de la serie DSN-6000 se encuentra apagado.
2. Quite la cubierta del módulo de batería de respaldo.



3. Inserte el módulo de batería de respaldo.



4. Apriete los tornillos

5. Encienda el dispositivo de la serie DSN-6000

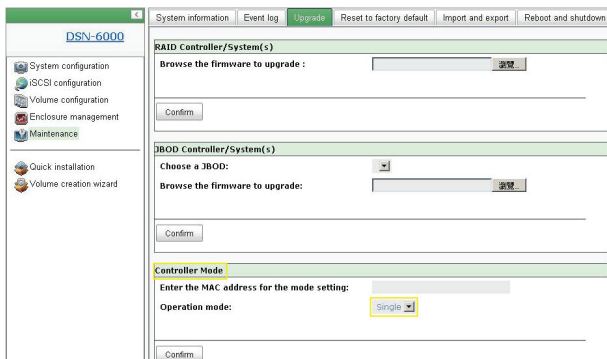
## Instalar DSN-610/DSN-640 en el subsistema DSN-6x10

Este procedimiento se aplica para actualizar de DSN-6110 a DSN6120 así como de DSN-6410 a DSN-6420. Antes de hacerlo, por favor asegúrese de que el DSN-6110 o DSN-6410 está instalado correctamente de acuerdo con los manuales.

Antes de poder insertar el segundo controlador Storage IP SAN, el sistema IP SAN de almacenamiento debe estar en funcionamiento y la página de mantenimiento / sistema de la interfaz gráfica de usuario debe ser similar a la siguiente captura de pantalla. Tenga en cuenta que el estatus es único, si tiene un solo controlador.

Item	Information
CPU type	XSC3-10P8134x Family rev 9 (v5l)
System memory	ECC Unbuffered DDR-II 2048MB
Firmware version	DSN-6000 2.0.1 (build 201102111500)
Serial number	14D64D868E40 (Controller 1 : 500137800390AD98 )
Backplane ID	DSN6000
JBOD serial no.	No JBOD connected
JBOD status	No JBOD connected
Status	Single
Replication	Not activated.

También puede comprobar el modo de controlador en “Mantenimiento/Actualización”. Revise la sección “Modo Controlador”.



Por favor, siga los siguientes pasos para actualizar a modo de controlador dual.

## Paso 1

Vaya a “Mantenimiento/Sistema”. Copie el número de serie del Storage IP SAN.

DSN-6000		System information	Event log	Upgrade	Reset to factory default	
System configuration	iSCSI configuration	Volume configuration	Enclosure management	Maintenance	Quick installation	Volume creation wizard
Item	Information					
CPU type	XSC3-IOP8134x Family rev 9 (v5I)					
System memory	ECC Unbuffered DDR-II 2048MB					
Firmware version	DSN-6000 2.0.1 (build 201102111500)					
Serial number	14D64D868E40 Controller 1 : 500137800390AD98 )					
Backplane ID	DSN6000					
JBOD serial no.	No JBOD connected					
JBOD status	No JBOD connected					
Status	Single					
Replication	Not activated.					

## Paso 2

Vaya a “Mantenimiento/Actualización” y pegue el número de serie en la sección “Controlador Modo”. Seleccione “Dual”, como el modo de funcionamiento.

System information	Event log	Upgrade	Reset to factory default	Import and export	Reboot and shutdown
<b>RAID Controller/System(s)</b>					
Browse the firmware to upgrade :					
<input type="text"/>					
<input type="button" value="瀏覽"/>					
<input type="button" value="Confirm"/>					
<b>JBOD Controller/System(s)</b>					
Choose a JBOD:					
<input type="text"/>					
Browse the firmware to upgrade:					
<input type="text"/>					
<input type="button" value="瀏覽"/>					
<input type="button" value="Confirm"/>					
<b>Controller Mode</b>					
Enter the MAC address for the mode setting:					
<input type="text" value="14D64D868E40"/>					
Operation mode:					
<input type="button" value="Single"/>					
<input type="button" value="Dual"/>					
<input type="button" value="Single"/>					
<input type="button" value="Confirm"/>					

## Paso 3

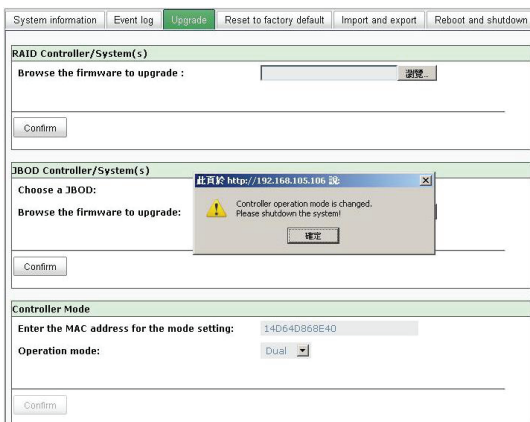
Haga clic en “Confirmar”. El sistema le pedirá que apague. Por favor, apague el dispositivo Storage IP SAN.

System information	Event log	Upgrade	Reset to factory default	Import and export	Reboot and shutdown
<b>RAID Controller/System(s)</b>					
Browse the firmware to upgrade :					
<input type="text"/>					
<input type="button" value="瀏覽"/>					
<input type="button" value="Confirm"/>					
<b>JBOD Controller/System(s)</b>					
Choose a JBOD:					
<input type="text"/>					
Browse the firmware to upgrade:					
<input type="text"/>					
<input type="button" value="瀏覽"/>					
<input type="button" value="Confirm"/>					
<b>Controller Mode</b>					
Enter the MAC address for the mode setting:					
<input type="text" value="14D64D868E40"/>					
Operation mode:					
<input type="button" value="Dual"/>					
<input type="button" value="Confirm"/>					

此頁於 <https://192.168.105.106> 說

Controller operation mode will be changed. Sure?

Haga clic en Ok.



Vaya a “Mantenimiento\Reiniciar y apagar”. Haga clic en “Apagar” para apagar el sistema.



Haga clic en Ok.



## Paso 4

Apague DSN-6110 o DSN-6410 al presionar el botón de encendido. Quite la ranura vacía aflojando los tornillos y palancas de expulsión.



## Paso 5

Inserte el segundo controlador del Storage IP SAN y asegure en su lugar, y luego encienda el sistema.



El storage IP SAN debe aparecer ahora en modo de controlador dual, ya sea como DSN-6120 o DSN-6420.

Vaya a "Mantenimiento\Información del sistema" para comprobar que ahora el storage IP SAN se está ejecutando en modo de controlador doble.

DSN-6000

- System configuration
- iSCSI configuration
- Volume configuration
- Enclosure management
- Maintenance
- Quick installation
- Volume creation wizard

Item	Information
CPU type	X5C3-IOP8134x Family rev 9 (v6)
System memory	ECC Unbuffered DDR-II 2048MB
Firmware version	DSN-6000 2.0.1 (build 201102111500)
Serial number	14D64D868E40 (Controller 1 : 500137800390AD98 ,Controller 2 : 500137800390A5D8)
Backplane ID	DSN6000
JBOD serial no.	No JBOD connected
JBOD status	No JBOD connected
Status	Normal
Replication	Not activated

Usted puede encontrar actualizaciones de softwares o firmwares y documentación para usuarios a través de nuestro sitio [www.dlinkla.com](http://www.dlinkla.com)

### SOPORTE TÉCNICO PARA USUARIOS EN LATINO AMERICA

Soporte técnico a través de los siguientes teléfonos de D-Link

PAIS	NUMERO
Argentina	0800 - 12235465
Chile	800 - 835465 ó (02) 5941520
Colombia	01800 - 9525465
Costa Rica	0800 - 0521478
Ecuador	1800 - 035465
El Salvador	800 - 6335
Guatemala	1800 - 8350255
México	01800 - 1233201
Panamá	011 008000525465
Perú	0800 - 00968
Venezuela	0800 - 1005767

### Soporte Técnico de D-Link a través de Internet

Horario de atención Soporte Técnico en [www.dlinkla.com](http://www.dlinkla.com)

e-mail: [suporte@dlinkla.com](mailto:suporte@dlinkla.com) & [consultas@dlinkla.com](mailto:consultas@dlinkla.com)

# 快速安裝手冊

## DSN-610/640

iSCSI IP SAN storage

### 包裝內容

您所購買的產品如與下列清單不符或是有缺少情況，請與您原購買經銷商聯繫。



RAID controller, DSN-610  
or DSN-640 (x1)



GBIC transceiver(僅適用於  
DSN-640)

### 安裝電池備援模組

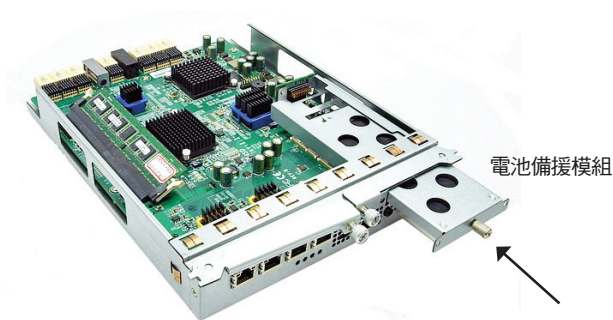
請依照下列步驟安裝電池備援模組

1. 請確認DSN-6000 series已經關機。
2. 移除電池備援模組的面板





### 3. 將電池備援模組裝入



### 4. 將螺絲鎖緊

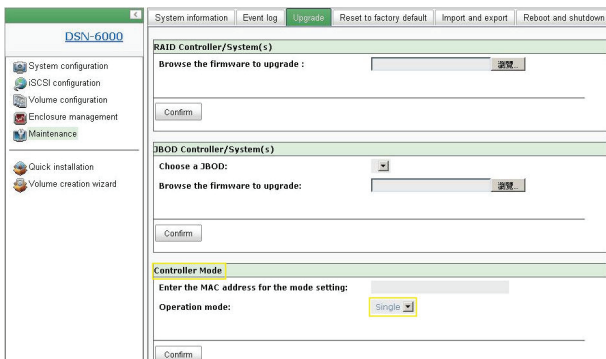
### 5. 將DSN-6000 series開機

## 將DSN-610/DSN-640 安裝設定至 DSN-6x10

下列步驟可讓您將DSN-6110升級成DSN-6120，同樣的也可以讓DSN-6410升級成DSN-6420。升級前，請先確認DSN-6110或DSN-6410 已依據操作手冊正確地完成安裝。您可以在IP SAN Storage先裝入第二個控制器，系統將會開啟維護系統(maintenance/system)設定頁面，如下列螢幕截圖。請注意目前狀態為單一個控制器。

Item	Information
CPU type	XSC3-10P8134x Family rev 9 (v5l)
System memory	ECC Unbuffered DDR-II 2048MB
Firmware version	DSN-6000 2.0.1 (build 201102111500)
Serial number	14D64D868E40 (Controller 1 : 500137800390AD98 )
Backplane ID	DSN6000
JBOD serial no.	No JBOD connected
JBOD status	No JBOD connected
Status	Single
Replication	Not activated.

您必須要進入維護升級(maintenance\ Upgrade)設定頁面核對控制器模式，請點選“Controller Mode”



請依據下列步驟升級成雙控制器。

## 步驟 1

進入維護系統(maintenance\system)設定頁面，複製IP SAN storage 序號。

Item	Information
CPU type	XSC3-IOP8134x Family rev 9 (v5I)
System memory	ECC Unbuffered DDR-II 2048MB
Firmware version	DSN-6000 2.0.1 (build 201102111500)
Serial number	14D64D868E40 Controller 1 : 500137800390AD98 )
Backplane ID	DSN6000
JBOD serial no.	No JBOD connected
JBOD status	No JBOD connected
Status	Single
Replication	Not activated.

## 步驟2

進入維護升級(maintenance\ Upgrade)設定頁面，請將序號貼在“Controller Mode”欄位，選擇“Dual”為運作模式。

System information	Event log	Upgrade	Reset to factory default	Import and export	Reboot and shutdown
<b>RAID Controller/System(s)</b>					
Browse the firmware to upgrade :					
<input type="text"/> 瀏覽					
<input type="button" value="Confirm"/>					
<b>JBOD Controller/System(s)</b>					
Choose a JBOD:					
<input type="text"/> 瀏覽					
<input type="button" value="Confirm"/>					
<b>Controller Mode</b>					
Enter the MAC address for the mode setting: 14D64D868E40					
Operation mode:					
Single					
Dual					
Single					
<input type="button" value="Confirm"/>					

## 步驟3

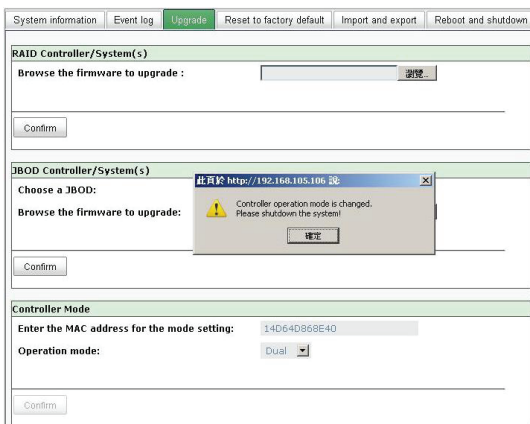
點選“confirm”。系統將會詢問您是否要關機，請選擇關機。

System information	Event log	Upgrade	Reset to factory default	Import and export	Reboot and shutdown
<b>RAID Controller/System(s)</b>					
Browse the firmware to upgrade :					
<input type="text"/> 瀏覽					
<input type="button" value="Confirm"/>					
<b>JBOD Controller/System(s)</b>					
Choose a JBOD:					
Browse the firmware to upgrade:					
<input type="button" value="Confirm"/>					
<b>Controller Mode</b>					
Enter the MAC address for the mode setting: 14D64D868E40					
Operation mode:					
Dual					
<input type="button" value="Confirm"/>					

此頁於 <http://192.168.105.106> 說

Controller operation mode will be changed. Sure?

點選 確定



進入維護重開機(Maintenance)Reboot 選擇關機，請點選“Shutdown”將系統關機。

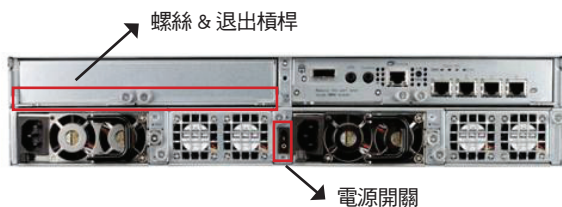


點選 確定



#### 步驟4

利用電源開關將DSN-6110或DSN-6410 關機，利用螺絲跟退出槓桿將空的機殼箱移除。



#### 步驟5

裝入第二個控制器至IP SAN storage 並且確認安全固定後再將系統開機。



IP SAN storage現在將會出現雙控制器模式無論是DSN-6120 或 DSN-6420。

進入維護系統資訊(Maintenance\System information)確認IP SAN storage 現在以雙控制器模式運作。

Item	Information
CPU type	X5C3-IOP8134x Family rev 9 (v5)
System memory	ECC Unbuffered DDR-II 2048MB
Firmware version	DSN-6000 2.0.1 (build 201102111500)
Serial number	14D64068E40 (Controller 1 : 500137800390AD98 ,Controller 2 : 500137800390A5D6)
Backplane ID	DSN6000
JBOD serial no.	No JBOD connected
JBOD status	No JBOD connected
Status	Normal
Replication	Not activated

如果您還有任何本使用手冊無法協助您解決的產品相關問題，台灣地區用戶可以透過我們的網站、電子郵件或電話等方式與D-Link台灣地區技術支援工程師聯絡。

### **D-Link 免付費技術諮詢專線**

0800-002-615

服務時間：週一至週五，早上9:00到晚上9:00

(不含周六、日及國定假日)

網 站：<http://www.dlink.com.tw>

電子郵件：[dssqa\\_service@dlink.com.tw](mailto:dssqa_service@dlink.com.tw)

如果您是台灣地區以外的用戶，請參考**D-Link**網站，全球各地分公司的聯絡資訊以取得相關支援服務。

產品保固期限、台灣區維修據點查詢，請參考以下網頁說明：

<http://www.dlink.com.tw>

產品維修：

使用者可直接送至全省聯強直營維修站或請洽您的原購買經銷商。

# Panduan Instalasi Cepat DSN-610/640 Storage iSCSI IP SAN

## Isi Kemasan

Bila salah satu dari barang yang disebut tidak ada, harap hubungi reseller anda.



RAID Controller, DSN-610  
atau DSN-640 (x1)



Transceiver GBIC (x1) dan  
kabel (x1) hanya untuk  
DSN-640

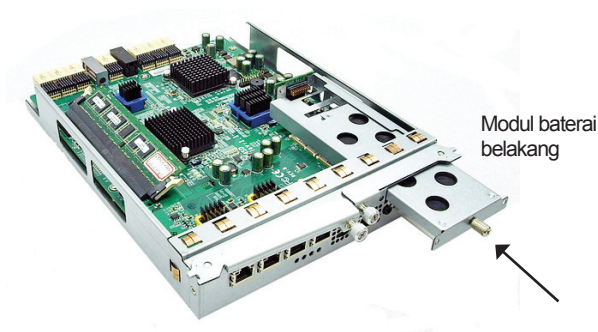
## Menginstal modul baterai cadangan

Ikuti prosedur di bawah ini untuk menginstal modul baterai cadangan.

1. Pastikan DSN-6000 seri sudah mati.
2. Lepaskan penutup dari modul baterai cadangan.



3. Masukkan modul baterai cadangan



4. Kencangkan sekrup

5. Nyalakan DSN-6000 seri

## Menginstal DSN-610/DSN-640 pada subsistem DSN-6x10

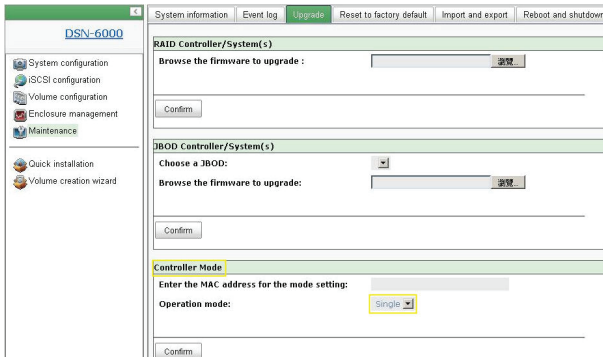
Prosedur berikut ini berlaku untuk upgrade dari DSN6110 ke DSN6120 serta dari DSN-6410 ke DSN-6420. Sebelum Anda melakukannya, pastikan bahwa DSN-6110 atau DSN-6410 sudah benar diinstal sesuai dengan manual.

Sebelum Anda dapat menyisipkan kontroler kedua untuk storage IP SAN, sistem storage IP SAN harus menyala dan menjalankan halaman "Maintenance\System"; pada GUI akan terlihat seperti screenshot berikut. Perhatikan bahwa status adalah "Single" karena Anda hanya memiliki satu kontroler.

Item	Information
CPU type	XSC3-IOP8134x Family rev 9 (v51)
System memory	ECC Unbuffered DDR-II 2048MB
Firmware version	DSN-6000 2.0.1 (build 201102111500)
Serial number	14D64D868E40 (Controller 1 : 500137800390AD98 )
Backplane ID	DSN6000
JBOD serial no.	No JBOD connected
JBOD status	No JBOD connected
Status	Single
Replication	Not activated.



Anda juga dapat memverifikasi mode kontroler di “Maintenance\Upgrade”. Periksa bagian “Controller Mode”.



Ikuti langkah-langkah di bawah ini untuk meng-upgrade ke modus “dual controller”.

## Langkah 1

Buka halaman “Maintenance\System”. Salin nomor serial storage IP SAN.

DSN-6000		System information	Event log	Upgrade	Reset to factory default																				
<ul style="list-style-type: none"> <li>System configuration</li> <li>iSCSI configuration</li> <li>Volume configuration</li> <li>Enclosure management</li> <li>Maintenance</li> <li>Quick installation</li> <li>Volume creation wizard</li> </ul>		<table border="1"> <thead> <tr> <th>Item</th> <th>Information</th> </tr> </thead> <tbody> <tr> <td>CPU type</td> <td>XSC3-IOP8134x Family rev 9 (v5I)</td> </tr> <tr> <td>System memory</td> <td>ECC Unbuffered DDR-II 2048MB</td> </tr> <tr> <td>Firmware version</td> <td>DSN-6000 2.0.1 (build 201102111500)</td> </tr> <tr> <td>Serial number</td> <td>14D64D868E40 Controller 1 : 500137800390AD98 )</td> </tr> <tr> <td>Backplane ID</td> <td>DSN6000</td> </tr> <tr> <td>JBOD serial no.</td> <td>No JBOD connected</td> </tr> <tr> <td>JBOD status</td> <td>No JBOD connected</td> </tr> <tr> <td>Status</td> <td>Single</td> </tr> <tr> <td>Replication</td> <td>Not activated.</td> </tr> </tbody> </table>	Item	Information	CPU type	XSC3-IOP8134x Family rev 9 (v5I)	System memory	ECC Unbuffered DDR-II 2048MB	Firmware version	DSN-6000 2.0.1 (build 201102111500)	Serial number	14D64D868E40 Controller 1 : 500137800390AD98 )	Backplane ID	DSN6000	JBOD serial no.	No JBOD connected	JBOD status	No JBOD connected	Status	Single	Replication	Not activated.			
Item	Information																								
CPU type	XSC3-IOP8134x Family rev 9 (v5I)																								
System memory	ECC Unbuffered DDR-II 2048MB																								
Firmware version	DSN-6000 2.0.1 (build 201102111500)																								
Serial number	14D64D868E40 Controller 1 : 500137800390AD98 )																								
Backplane ID	DSN6000																								
JBOD serial no.	No JBOD connected																								
JBOD status	No JBOD connected																								
Status	Single																								
Replication	Not activated.																								

## Langkah 2

Buka halaman “Maintenance\Upgrade” dan masukkan nomor serial pada bagian “Controller Mode”. Pilih “Dual” sebagai mode pengoperasian.

The screenshot shows the 'Upgrade' tab in a web interface. It contains three main sections:

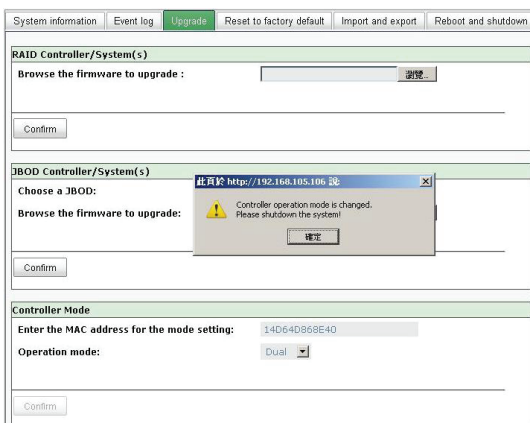
- RAID Controller/System(s)**: A text input field for 'Browse the firmware to upgrade' with a '浏览' (Browse) button and a 'Confirm' button below it.
- JBOD Controller/System(s)**: A dropdown menu for 'Choose a JBOD', a text input field for 'Browse the firmware to upgrade' with a '浏览' (Browse) button, and a 'Confirm' button below it.
- Controller Mode**: A text input field for 'Enter the MAC address for the mode setting' containing '14D64D868E40', a dropdown menu for 'Operation mode' with 'Dual' selected, and a 'Confirm' button below it.

## Langkah 3

Klik “confirm”. System akan meminta anda untuk mematikan mesin. Silahkan matikan storage IP SAN.

This screenshot is similar to the previous one, but with a confirmation dialog box overlaid on the JBOD section. The dialog box has a blue header with the text '此頁於 http://192.168.105.106 說' and a question mark icon. The main text reads 'Controller operation mode will be changed. Sure?'. There are two buttons at the bottom: '確定' (Confirm) and '取消' (Cancel). In the background, the 'Operation mode' dropdown in the Controller Mode section is now set to 'Dual'.

Klik "OK".



Buka halaman "Maintenance\Reboot and Shutdown". Klik "Shutdown" untuk mematikan sistem.

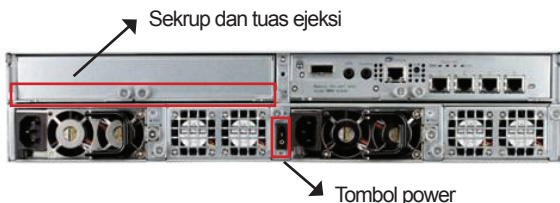


Klik "OK".



## Langkah 4

Matikan DSN-6110 atau DSN-6410 dengan menekan tombol power. Keluarkan kotak kosong dengan melonggarkan sekrup dan ejskikan tuas.



## Langkah 5

Masukkan controller kedua pada sistem storage IP SAN, kemudian amankan pada tempatnya, kemudian hidupkan kembali sistem.



Storage IP SAN seharusnya sekarang muncul dalam modus “dual controller” sebagai DSN-6120 atau DSN-6420.

Buka halaman “Maintenance\System Information” untuk mengecek bahwa sistem storage IP SAN berjalan dalam modus “dual controller”

Item	Information
CPU type	X5C3-IOPB134x Family rev 9 (v6)
System memory	ECC Unbuffered DDR-II 2048MB
Firmware version	DSN-6000 2.0.1 (build 201102111500)
Serial number	14D64D868E40 (Controller 1 : 500137800390AD98 ,Controller 2 : 500137800390A5D6)
Backplane ID	DSN6000
JBOD serial no.	No JBOD connected
JBOD status	No JBOD connected
Status	Normal
Replication	Not activated

## DUKUNGAN TEKNIS

Update perangkat lunak dan dokumentasi pengguna dapat diperoleh pada situs web D-Link.  
Dukungan Teknis untuk pelanggan:

### **Dukungan Teknis D-Link melalui telepon:**

Tel: +62-21-5731610

### **Dukungan Teknis D-Link melalui Internet:**

Email : [support@dlink.co.id](mailto:support@dlink.co.id)

Website : <http://support.dlink.co.id>

---

# Notes

---

# Notes

**D-Link<sup>®</sup>**



Ver. 1.00(DI)  
2011/05/25  
AB.DOC0D.QIG02