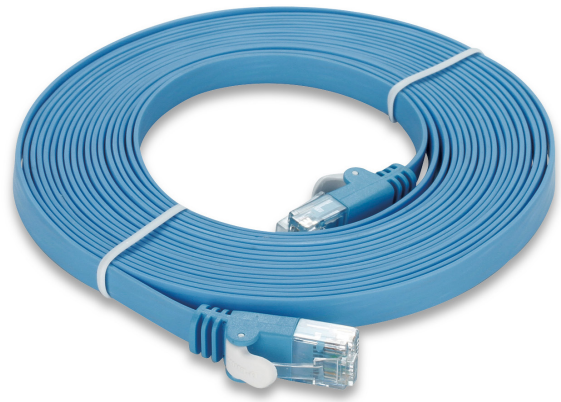




NCB-5EUORGF1-5



NCB-C6UBLUF1-5

CATEGORY 5e/6 FLAT UTP PATCH CORDS

ETHERNET CONNECTIVITY

Ideal for use with 10, 100Base-TX or 1000Base-T networks

HIGH-SPEED PERFORMANCE

Supports speeds of up to 1000 Mbps across distances of up to 100 feet

ULTRA-PORTABLE

Easy and flexible setup

RELIABLE CABLES FOR YOUR NETWORK

D-Link Category 5e and Category 6 Ethernet cables are superior for transmitting data over local area networks (LANs). These CAT5e/CAT6 cables exceed performance requirements specified by the TIA/EIA-568B.2 and IEC 60603-7-4 standards (Category 5e Class D). The CAT5e/6 cables are made using four Unshielded Twisted Pairs (UTP) of 100 ohm impedance and are protected by a plastic outer jacket.

CATEGORY 5e CABLE

The Category 5e cable, an enhanced version of Category 5, adheres to more stringent standards specified by TIA/EIA-568B.2 and IEC 60603-7-4. These cables are made using 32 gauge (AWG) copper wires with about three twists per inch enabling them to transmit data at 1000 Mbps (~1 Gigabit per second) with a frequency of 100 MHz. The CAT5e cables are suitable for 10BASE-T and 100BASE-TX Fast Ethernet.

CATEGORY 6 CABLE

The Category 6 cable is backward compatible with Category 5/5e and Category 3 specifications. Compared to its predecessors, CAT6 cables reduce crosstalk and system noise. The superior insulation around the 32 gauge (AWG) copper wires attribute to its increased performance. The CAT6 cables can transmit data at 1000 Mbps (~1 Gigabit per second) with a frequency of 600 MHz. The CAT6 cables are suitable for 10BASE-T, 100BASE-TX Fast Ethernet, and 1000BASE-T / 1000BASE-TX (Gigabit Ethernet).

SUITABLE FOR A WIDE VARIETY OF APPLICATIONS

As streaming video and multimedia over LAN are gaining popularity, users demand faster data transmission and reduced waiting time. D-Link Category 5e/6 cables are ideal for simple, cost-effective and high-speed performance. They support a higher signal-to-noise ratio, providing better reliability for current applications and higher data rates for future applications. CAT5e and CAT6 cables are suitable for applications such as voice services, token ring, PoE and ATM (at up to 155 Mbit/s, over short distances). The CAT6 cables meet several key criteria for efficient and effective high-speed networks for Gigabit Ethernet. With Gigabit backbones installed, companies can provide Gigabit Ethernet service to workstations to support applications such as streaming video, medical imaging and centralized applications.

APPLICATIONS

- CAT5e: 10Base-T, 100Base-TX, Fast Ethernet
- CAT6: 10Base-T, 100Base-TX, Fast Ethernet, 1000Base-T Gigabit Ethernet
- 100VG-AnyLan (IEEE 802.12)
- 550 MHz Broadband Video
- Voice, T1, ISDN
- 155/622 Mbps ATM
- Power over Ethernet (PoE)

TECHNICAL SPECIFICATIONS

CABLE PROFILE

- CAT5e/6 Unshielded Twisted Pair 100Ω stranded cable
- EIA/TIA 568 A/B category 6 specification
- Performance of up to 600 MHz
- HDPE insulated conductors in an overall PVC jacket
- Individual cable pairs are separated by a PE former

CAT 5E UTP FLAT PATCH CORDS

- NCB-5EUORG1-3 / NCB-5EUORG1-5
 - Cable Length Type: 3 m / 5 m
 - Color Code: Orange
- NCB-5EUYEL1-3 / NCB-5EUYEL1-5
 - Cable Length Type: 3 m / 5 m
 - Color Code: Yellow
- NCB-5EUWH1-3 / NCB-5EUWH1-5
 - Cable Length Type: 3 m / 5 m
 - Color Code: White
- NCB-5EUBL1-3 / NCB-5EUBL1-5
 - Cable Length Type: 3 m / 5 m
 - Color Code: Blue

CAT 6 UTP FLAT PATCH CORDS

- NCB-C6UORG1-3 / NCB-C6UORG1-5
 - Cable Length Type: 3 m / 5 m
 - Color Code: Orange
- NCB-C6UYEL1-3 / NCB-C6UYEL1-5
 - Cable Length Type: 3 m / 5 m
 - Color Code: Yellow
- NCB-C6UWH1-3 / NCB-C6UWH1-5

- Cable Length Type: 3 m / 5 m
- Color Code: White
- NCB-C6UBL1-3 / NCB-C6UBL1-5
 - Cable Length Type: 3 m / 5 m
 - Color Code: Blue

CONDUCTOR

- 32 AWG Round
- Multi-strand and highly flexible

MECHANICAL FEATURES

- Wiring: 32 AWG
- Polycarbonate plug
- Gold over nickel contacts
- Stranded, unshielded

ELECTRICAL PROFILE

- Current Rating: 1.5 A max
- Insulation Resistance: 500 mΩ (min)
- Voltage Rating: 30 V
- Contact Resistance: 15 mΩ (max) per contact

CERTIFICATIONS

- UL94V-0 Rated Plastic
- RoHS Compliant
- ETL Verified
- ANSI/TIA/EIA-568-8.2
- ISO/IEC-11801



NCB-5EUORG1-3



NCB-5EUBL1-5



NCB-5EUWH1-5



NCB-5EUYEL1-3



NCB-C6UBL1-5



NCB-C6UWH1-5



NCB-C6UORG1-3



NCB-C6UYEL1-3

D-Link Corporation
 No. 289 Xinhu 3rd Road, Neihu, Taipei 114, Taiwan
 Specifications are subject to change without notice.
 D-Link is a registered trademark of D-Link Corporation and its overseas subsidiaries.
 All other trademarks belong to their respective owners.
 ©2010 D-Link Corporation. All rights reserved.
 Release 01 (September 2010)